

CTC Union Technologies Co., Ltd.
 Far Eastern Vienna Technology Center
 (Neihu Technology Park)
 8F, No. 60, Zhouzi St., Neihu, Taipei 114,
 Taiwan

T +886-2-26591021
F +886-2-26590237
E sales@ctcu.com
 marketing@ctcu.com
H www.ctcu.com



ISO 9001 Quality System Certified
 2015 CTC Union Technologies Co., LTD.
 All trademarks are the property of their respective owners.
 Technical information in this document is subject to change without notice.



User Guide

16G-3R Transponder FRM220-16G-3R



Table of Contents

Introduction/Features	----- 2
Specifications	----- 3
Management Features	----- 3
Panel/Installation	----- 4
LED Indicators	----- 5
DIP Setting	----- 5-6
Console Management: Settings	----- 7
Operation, Auto Laser Shutdown	----- 8
Digital Diagnostics	----- 9
Loopback Testing	----- 10
Upgrading	----- 10-12
Application	----- 13-14

Version 1.0 March 2015

Introduction

The **FRM220-16G-3R** is a multi-rate, up to 16G 3R optical regeneration device. The "3R" consists of Re-amplification, Re-shaping and Re-timing. The transponder card converts a data signal to the correct wavelength for transmission on a specific channel by supporting SFP+ optics on both line side and client side interfaces. When the **FRM220-16G-3R** card is placed in the FRM220 rack with SNMP management, the management can view the converter card's status, type, version, fiber link status and alarms. The card can be configured to enable or disable the port, reset the port, provide diagnostic loopback, and set the desired data rate. The fiber optical ports also provide 1+1 optical protection. Automatic optical line Protection Switching is supported for the aggregate fiber port.

This card is specifically designed for four popular protocols that run at near ten gigabit speed. They include 10G Ethernet, 16G Fiber Channel, OC-192(STM-64) and OTU2.

Features

- Supports multiple protocols and data rates from 1Gbps to 14Gbps.
- Repeater functions for re-amplification, re-shaping and re-timing.
- Low cost transponder application.
- Available with redundant fiber support.
- Supports rack management or stand-alone.
- Supports Auto-Laser Shutdown (ALS) and Link Fault Pass through (LFP).
- Supports Loopback test.
- Digital Diagnostic Monitor of supported SFP modules.

The SFP+ sockets support a wide range of optical modules to address any 10 Gigabit network situation.

Single-mode
 Multi-mode
 Single fiber bi-directional
 Coarse and Dense Wave Division Multiplexing (CWDM and DWDM)

WARNING: Fiber optic equipment may emit laser or infrared light that can injure your eyes. Never look into an optical fiber or connector port. Always assume that fiber optic cables are connected to a laser light source.

Specifications

Optical Interface

• Transceiver Type	SFP, SFP+
• Connector	LC
Data Rate	1Gbps~14Gbps
Duplex Mode	Full Duplex
Fiber	Depends on SFP(+)
Distance	Depends on SFP(+)
Wavelength	CWDM 1271~1611nm, DWDM 1529.5~1565.5nm

Indications

LED (PWR, SYS, MODE, TEST, FX1,FX2,FX3, FX4)

Power

- Input 12V/1A
- Consumption <10W

Dimensions

155x 88x 23mm (D X W X H)

Weight

120g

Temperature

0~50°C (Operating), -10~70°C (Storage)

Humidity

10~90% non-condensing

Certification

CE, FCC, LVD, RoHS

MTBF

65000 hrs (25°C)

Test Loops

FX1 LB, FX2 LB, FX3 LB, FX4 LB

Management Features

The FRM220-16G-3R has an on-board 8 pole DIP Switch which can be used to configure the device for stand-alone operation when non-managed. When placed in a stand-alone chassis with DB9 console port, these devices also support a text based serial terminal with an easy to use menu system for configuration. When placed in a managed chassis, the card is configured and monitored through the chassis NMC (network management controller) via console, Telnet, Web HTTP or SNMP.

1. Stand-alone - Simple DIP settings
2. Stand-alone - with serial console, menu driven, overrides DIP settings
3. Rack management - When placed in NMC managed rack, all other settings are overridden by the NMC management.

- 3 -

www.CTCU.com

Panel

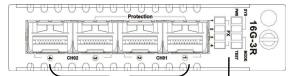


Figure 1. Front Panel of FRM220-16G-3R

Installation

This converter card can be placed in 1-slot CH01, CH01M w/console, 2-slot CH02M w/console, CH02-NMC with NMC or the full 20-slot CH20 chassis.

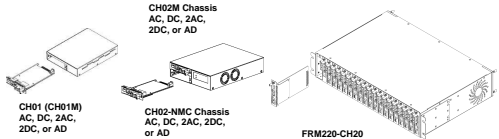
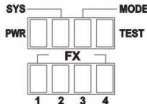


Figure 2. Slide-in Card mounting of FRM220-16G-3R

- 4 -

www.CTCU.com

LED Indicators

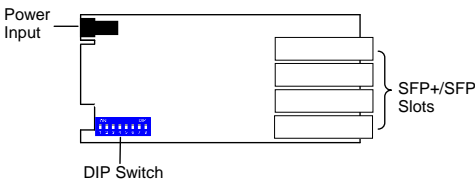


LED	Color	State	Status
PWR	(Green)	On	Power on
		Flash	Device Disable
		Off	No Power
SYS	(Green)	On	Normal
		Flash	Firmware Upgrade
		Off	System Fail
MODE	(Green)	On	Protection Mode
		Off	2 Channel Mode
TEST	(Red)	On	Loopback Test Mode
		Off	Normal
FX1-FX4	(Green)	On	CDR SYNC
		Flash	Signal Detected
		Off	Link Loss/RX Power Lower

Note: In protection mode, FX4 LED is always off.

DIP Settings

DIP Switch On PCB



- 5 -

www.CTCU.com

Transmission Protocol Mode & Date Rate

Transmission Protocol Mode	Data Rate	DIP Switch Pins					
		1	2	3	4	5	6
Ethernet	10GE	OFF	OFF	OFF	OFF	OFF	OFF
	1GE	ON	OFF	OFF	OFF	OFF	OFF
SONET/SDH	250Base-X	OFF	ON	OFF	OFF	OFF	OFF
	OC192/STM64	OFF	OFF	OFF	ON	OFF	OFF
	OC48/STM16	ON	OFF	OFF	ON	OFF	OFF
	OC24	OFF	ON	OFF	ON	OFF	OFF
Fiber Channel	OC12/STM4	ON	ON	OFF	ON	OFF	OFF
	16G	OFF	OFF	OFF	OFF	ON	OFF
	10G	ON	OFF	OFF	OFF	ON	OFF
	8G	OFF	ON	OFF	OFF	ON	OFF
	4G	ON	ON	OFF	OFF	ON	OFF
	2G	OFF	OFF	ON	OFF	ON	OFF
CPRI	1G	ON	OFF	ON	OFF	ON	OFF
	x20 option 8	OFF	OFF	OFF	ON	ON	OFF
	x16 option 7	ON	OFF	OFF	ON	ON	OFF
	x10 option 6	OFF	ON	OFF	ON	ON	OFF
	x8 option 5	ON	ON	OFF	ON	ON	OFF
	x5 option 4	OFF	OFF	ON	ON	ON	OFF
OBSAI	x4 option 3	ON	OFF	ON	ON	ON	OFF
	x2 option 2	OFF	ON	ON	ON	ON	OFF
	x1 option 1	ON	ON	ON	ON	ON	OFF
	x8	OFF	OFF	OFF	OFF	OFF	ON
	x4	ON	OFF	OFF	OFF	OFF	ON
	x2	OFF	ON	OFF	OFF	OFF	ON
OTU	x1	ON	ON	OFF	OFF	OFF	ON
	10GE OTU2e	OFF	OFF	OFF	ON	ON	OFF
	10GE OTU1e	ON	OFF	OFF	ON	OFF	ON
	STM64 OTU2	OFF	ON	OFF	ON	OFF	ON
	STM64 OTU1	ON	ON	OFF	ON	OFF	ON
	10GFC OTU2	OFF	OFF	ON	ON	OFF	ON
ODU	10GE ODU2e	OFF	OFF	OFF	OFF	ON	ON
	10GE ODU1e	ON	OFF	OFF	OFF	ON	ON
	STM64 ODU2	OFF	ON	OFF	OFF	ON	ON
	STM16 ODU1	ON	ON	OFF	OFF	ON	ON
	10GFC ODU2	OFF	OFF	ON	ON	OFF	ON
	10GFC ODU1	ON	ON	OFF	OFF	ON	ON
SDI/Other	HD-SDI	OFF	OFF	OFF	ON	ON	ON
	3G-SDI	ON	OFF	OFF	ON	ON	ON
	6G-SDI	OFF	ON	OFF	ON	ON	ON
	12G-SDI	ON	ON	OFF	ON	ON	ON

Working Mode & Function Setting

Working Mode	Function Setting	DIP Switch Pins	
		7	8
Protection Mode	Auto-Revert	OFF	OFF
	Non-Revert	ON	ON
Dual Channel Mode	LFP Disable	ON	OFF
	LFP Enable	ON	ON

Note: All of these settings are ignored if the card is placed in the FRM220-CH20 with NMC/SNMP management. The card will follow the settings done via the chassis management. (Refer to NMC operation manual for details on managing all cards.)

- 6 -

www.CTCU.com

Console Management

When placed in the 1-slot CH01M or 2-slot CH02M chassis, this card can be locally managed by connecting a simple serial terminal such as a notebook computer that has an RS232 port or via a commonly available USB to RS232 adapter. In Windows XP, HyperTerminal™ is an application available for emulating a serial terminal. You can also search for TeraTerm or PuTTY which are free alternatives, especially if the operating system is Vista or Win7.

Settings

Baud Rate: 38,400
 Data bits: 8
 Parity bits: none
 Stop bits: 1
 Handshaking: none
 Emulation: VT-100

Connect the serial cable to the CH01M or CH02M's DB9. Run the terminal emulation program. When prompted with Password, enter "admin". Then, press [Enter] to display the "Main Menu" screen. The following is an example.

```
*****
*** CTC UNION TECHNOLOGIES CO.,LTD ***
*** FRM220-16G3R ***
*****
Ver:[1.000-1.000-0.000-0.000] [CH-01M ]
-----
[ SFP 1 ] [ SFP 2 ] [ SFP 3 ]
-----
Present No DOWN DOWN No
Link DOWN DOWN DOWN No
CDR Unlocked Unlocked Unlocked No
DOM No No No Failure
No Fault Failure Failure Failure
-----
< 1 > Port Active [Enable ]
< 2 > Work Mode [Protection]
< 3 > Protection Function
< 4 > Filter Configuration
< 5 > Loopback Test Function
< 6 > Device Configuration
< 7 > Semi-Active [Enable ]
< 8 > Device Reset
< 9 > Set To Default
< 0 > Store Parameters
< 1 > Firmware Upgrade with Xmodem
< 2 > Password Setup
-----
[ ESC ] Logout
```

Figure 3. Main Menu Console Screen

Operation

Select any of the menu items by keying in the menu item number or letter. Use the [ESC] to return to a previous menu. Any setting is immediately applied to the transponder's circuitry. After all of the parameter settings have been selected, press "s" from the main menu to save the parameters in non-volatile RAM (NVR). To revert to previous settings before saving, press "r" to reset (reload previously saved parameters).

Explanation of Settings:

- 1. Port Active:** This will enable or disable the card. When inactive, no transmissions will be able to occur.
- 2. Work Mode:** Select Protection or Dual Channel work mode.
- 3. Protection/Dual Channel Function:** Select working path and data rate under Protection/Dual Channel work mode.
- 4. Fiber Configuration:** Set up Auto Laser Shutdown and Link Fault Pass Through and view SFP DDMI information.
- 5. Loopback Test Function:** Enable or disable Loopback test function.
- 6. Device Configuration:** Read the current temperature of the chip.
- 7. Semi Active:** This function works under Protection "Auto-Revert" & "Non-Revert" mode. When enabled, Secondary path will be blocked when Primary path works and vice versa. In short, one path is allowed for transmissions when enabled.

R. Device Reset: Parameter settings in NVR will be loaded.

D. Set to Default: Restores all settings to factory default.

S. Store Parameters: Saves the setting parameters into non-volatile RAM (NVR)

U. Firmware Upgrade with Xmodem: Upgrade the Firmware image.

P. Password Setup: Set up a new login password.

Auto Laser Shutdown

Automatic Laser Shutdown (ALS) is a technique used to automatically shut down the output power of the transmitter in case of fiber break according to ITU-T G.664. This is a safety feature that prevents dangerous levels of laser light from leaking out of a broken fiber, provided ALS is provisioned on both ends of the fiber pair. The sequence of events is as follows. If a fiber is cut, the receiver will detect a Loss Of Signal (LOS). The ALS agent will turn off the transmitter. The receiver at the far end will then detect an LOS and its ALS agent will turn off the transmitter. In this way the entire fiber will go dark.

Digital Diagnostics in SFP+

Modern optical SFP transceivers support digital diagnostics monitoring (DDM) functions according to the industry-standard SFF-8472. This feature is also known as digital optical monitoring (DOM) and gives the end user the ability to monitor real-time parameters of the SFP or SFP+, such as optical output power, optical input power, temperature, etc.

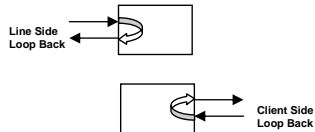
```
*****
*** CTC UNION TECHNOLOGIES CO.,LTD ***
*** FRM220-16G3R ***
*****
Ver:[1.000-1.000-0.000-0.000] [CH-01M ]
-----
<< Optical D/D Function Status >>
< 1 > LOS Alarm by Ex Power [Disable]
-----
Vendor Name :[CTC UNION ]
Vendor Part Number :[SPM-1000-SR85 ]
Optical Type :[Multi ]
Wave Length :[ 9850 nm ]
-----
Link Length :[ 0000 m ]
Tx Power :[ -03 dBm ]
Rx Power :[ -40 dBm ]
Rx Sensitivity :[ -10 dBm ]
Temperature :[ 33 C ]
-----
[ ESC ] Go to previous menu. Please select an item.
```

Figure 4. Example of reading Digital Diagnostics in SFP+

Parameters are read from any MSA (Multisource Agreement) compliant SFP+ module. Extended information is only available in modules which support D/D or DOM function.

Loopback Testing (LBT)

The loop back capability of the FRM220-16G-3R is useful for debugging a dysfunctional link, or when commissioning a site. In loopback mode, the signal is routed into the CDR circuitry and then routed back to the signal source.



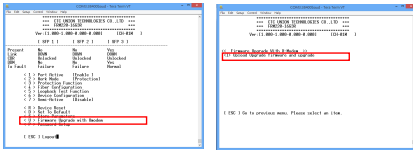
FRM220-16G-3R model can do loop back through one of the management interfaces i.e. local console or NMC. The loop back function is enabled by using a serial terminal connected to the 9 pin D-Sub on CH01M or CH02M, via the terminal menu system. If placed in FRM220-CH20 with NMC/SNMP, the chassis management system can access the card and perform all setting functions.

Stand-alone Firmware Upgrading

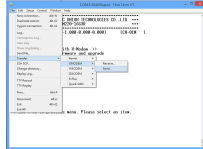
The FRM220-16G-3R card may be firmware upgraded using XMODEM when placed in CH01M or CH02M. The user may use serial terminal such as a notebook computer that has an RS232 port or via a commonly available USB to RS232 adapter. Then, use a serial terminal that can support XMODEM such as TeraTerm to start Firmware upgrade process.

Quick Procedure

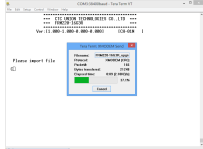
1. In the Main Menu, Key in "U" to enter Firmware upgrade page. Then, Key in "1" to start uploading Firmware.



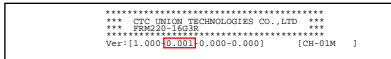
2. Send Firmware file via Xmodem and select the Firmware file that you want to upload.



3. Start upgrading new Firmware image.



4. Check the Firmware version after completing the Firmware upgrade process.



NMC Firmware Upgrading

The FRM220-16G-3R card may be firmware upgraded when it is placed in the FRM220 with NMC management card. The user may use a local console connection to the NMC, a remote Telnet (IP) connection, or a Web based (HTTP) connection with any available browser. The NMC communicates to all cards through a serial RS485 control bus. The upgrade code is transferred to the NMC by way of TFTP server.

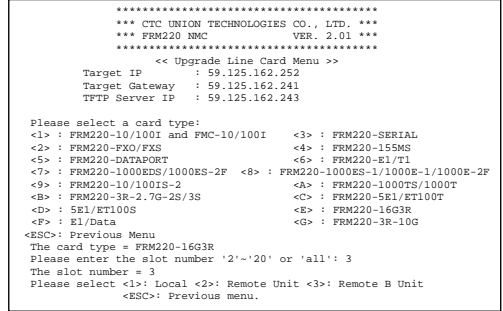
Quick Procedure

Place the line card's upgrade code on the TFTP server. Make sure you know the case sensitive file name. Connect to the FRM220-NMC by local console or by remote Telnet connection. From the main menu choose:

<L> SNMP System Configuration Setup

Then:

<U> Upgrade Line Card Menu

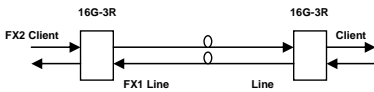


Select the line card type (FRM220-16G3R) and local unit. Enter filename. The upgrade should complete in only a couple of minutes. DO NOT disconnect or pullout/insert any other cards during the upgrade process.

Applications

The FRM220-16G 3R repeater works in point-to-point applications, either as a stand-alone or when placed in the FRM220-CH20 managed rack.

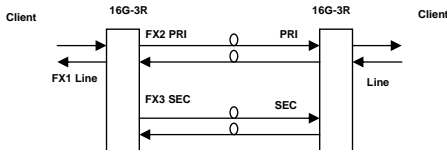
Extension Repeater



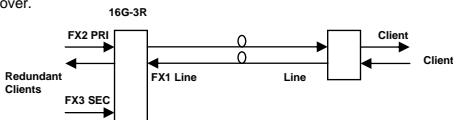
Set local and remote 3R repeater to the protocol's data rate either by local DIP or through management. The rate setting is the only setting required.

Protection

The FRM220-16G-3R has the ability to provide 1+1, auto revertive and non-revertive protection for single input, repeater/media converter applications on each trunk. This first application of protection is line side protection. In this setup, the line connector actually faces the client.



The second application provides for redundant clients and automatic fall over.



CWDM Transponder

The FRM220-16G-3R functions primarily as a repeater or a media converter. As a repeater for long-haul applications, the signal is fully regenerated at the trunk. Clock Data Recovery (CDR) helps in reshaping, retiming, and regenerating (3R) the output signal at a number of pre-assigned frequencies or protocols.

Dual Channel

In the CWDM/DWDM (Dual Channel) application, the 3R transponder acts as a fiber-to-fiber repeater and optical frequency converter between the client side equipment and the Optical Multiplexer/De-multiplexer. You can set the transponder to the protocol's data rate either by local DIP or through management.

